



Incorporation of Research Results into Forest Management

Research to Empower the Manager

**Gaetan Pelletier
J.D. Irving, Limited
September, 2008**



Outline

- Introduction
 - The current Context
 - Why the need for Research
- A history of JDI FRAC
- How do we Integrate Findings from Research
- New Questions



Outline

- Introduction
 - The current Context
 - Why the need for Research
- A history of JDI FRAC
- How do we Integrate Findings from Research
- New Questions



Today's Context

- **The Forest Industry is critical to N.B. (>8% GDP)**
- **New Brunswick is still a net importer of timber**
- **We should be Increasing Forest Productivity**
- **Can intensive Forest Management exist while maintaining the integrity of ecosystems?**



Why the need for Research

- **We need to grow more wood**
- **We change forests both at the stand and landscape scales**
- **There are significant knowledge gaps on potential impacts of forest management on different taxa and key ecosystem processes**
- **We are interested at doing the right thing**
- **We want our decisions to be based on science**

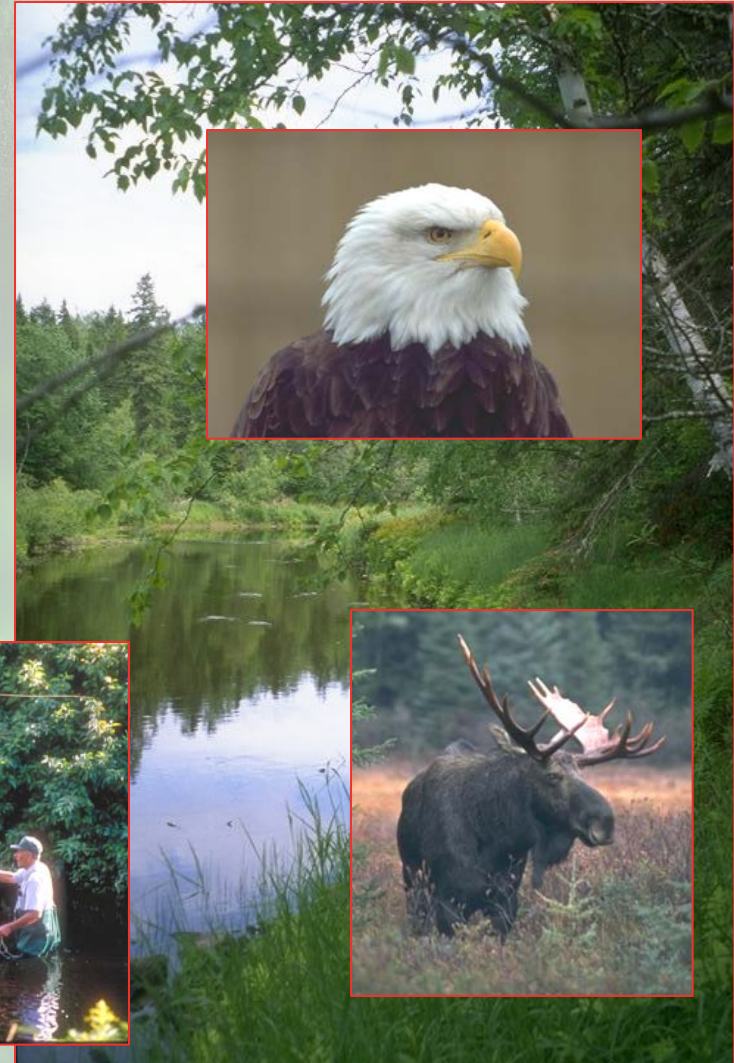


More than wood products...



Many Values

- Economic
- Wildlife Habitats
- Recreation
- Conservation /biodiversity
- Water Quality



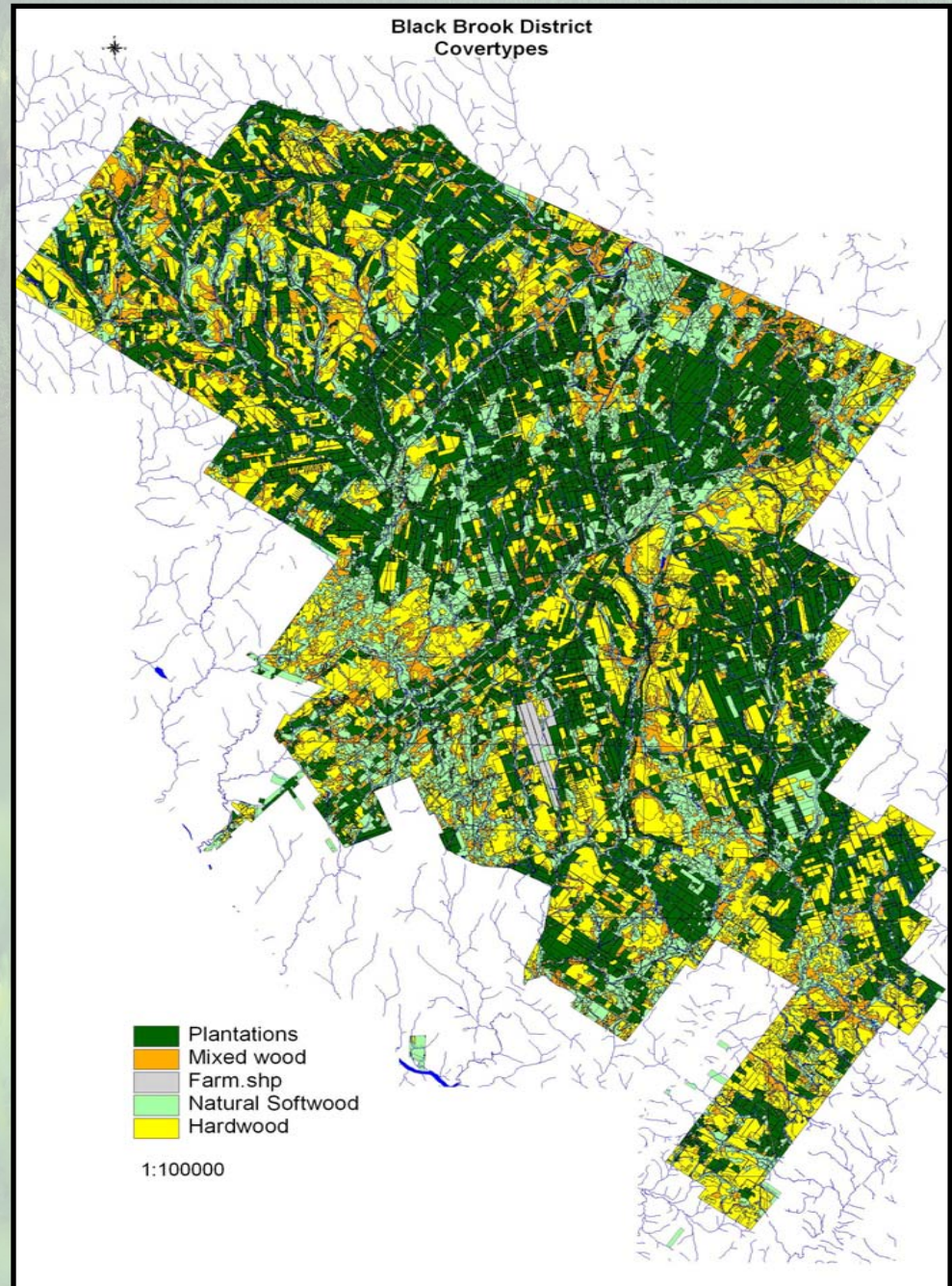


An example of a very productive forest

The Black Brook District...

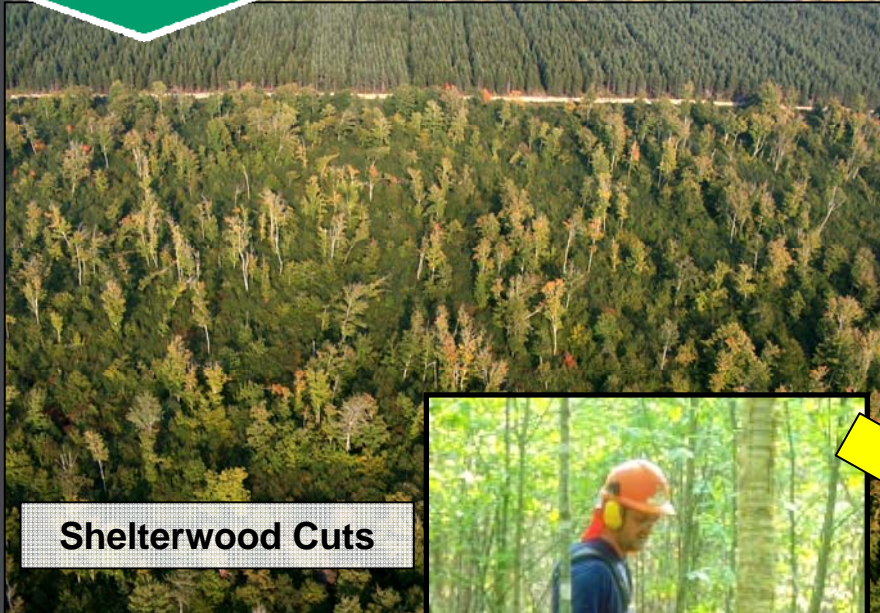
Private tract of 2100 km²

- 38% planted**
- 28% hardwoods**
- 17% mixed**
- 17% fir**
- >20% special management zones**





Example: Management of Hardwood Stands



Shelterwood Cuts



ons



Commercial Thinnings



Patch Cuts



Strip Cuts





Can Managed Forests meet habitat Objectives?





Outline

- Introduction
 - The current Context
 - Why the need for Research
- **A history of JDI FRAC**
- How do we Integrate Findings from Research
- New Questions



History of the JDI Forest Research Advisory Committee

- **Founded in 1998 as a product of FSC Certification audits**
- **Made up of renowned experts in ecological fields**
- **Originally lead by Gordon Baskerville**
- **First two years were to establish the foundation**
- **First projects in 2000-01**
- **Set aside some benchmark reserves for research**



The membership...

- **Dr. Dave MacLean, forest ecology (Chairman)**
- **Dr. Marc André Villard, bird ecology**
- **Dan Beaudette, habitat & biology**
- **Dr. Robert Wagner, forest productivity**
- **Dr. Jeremy Wilson, landscape ecology**
- **Dr. John Hagan, wildlife & landscape ecology**
- **Dr. Andy Whitman, wildlife & landscape ecology**
- **Company staff**
- **Other Researchers specific to individual projects**



Research to empower the forest manager

- Formed in 1998, JDI FRAC mandate was to identify or advocate research to help company managers solve problems in their forests
- Focused on research to address knowledge gaps w.r.t. non-timber biodiversity values & natural disturbance:
 - 1) establish objective measures for each target non-timber value
 - 2) determine functional cause-effect basis for mgmt. of availability of conditions needed for each non-timber value
- FRAC develops and recommends research projects:
 1. assess state of a forest quantitatively with respect to non-timber values, especially biodiversity
 2. role of natural disturbances as the historical cause of temporal/spatial patterns of stand types & stages of development
 3. Issue with intensive forest management
- must empower, not supplant, managers as decision makers
- active partnership of researchers & forest managers
- regular 2-way communication & 2-way education

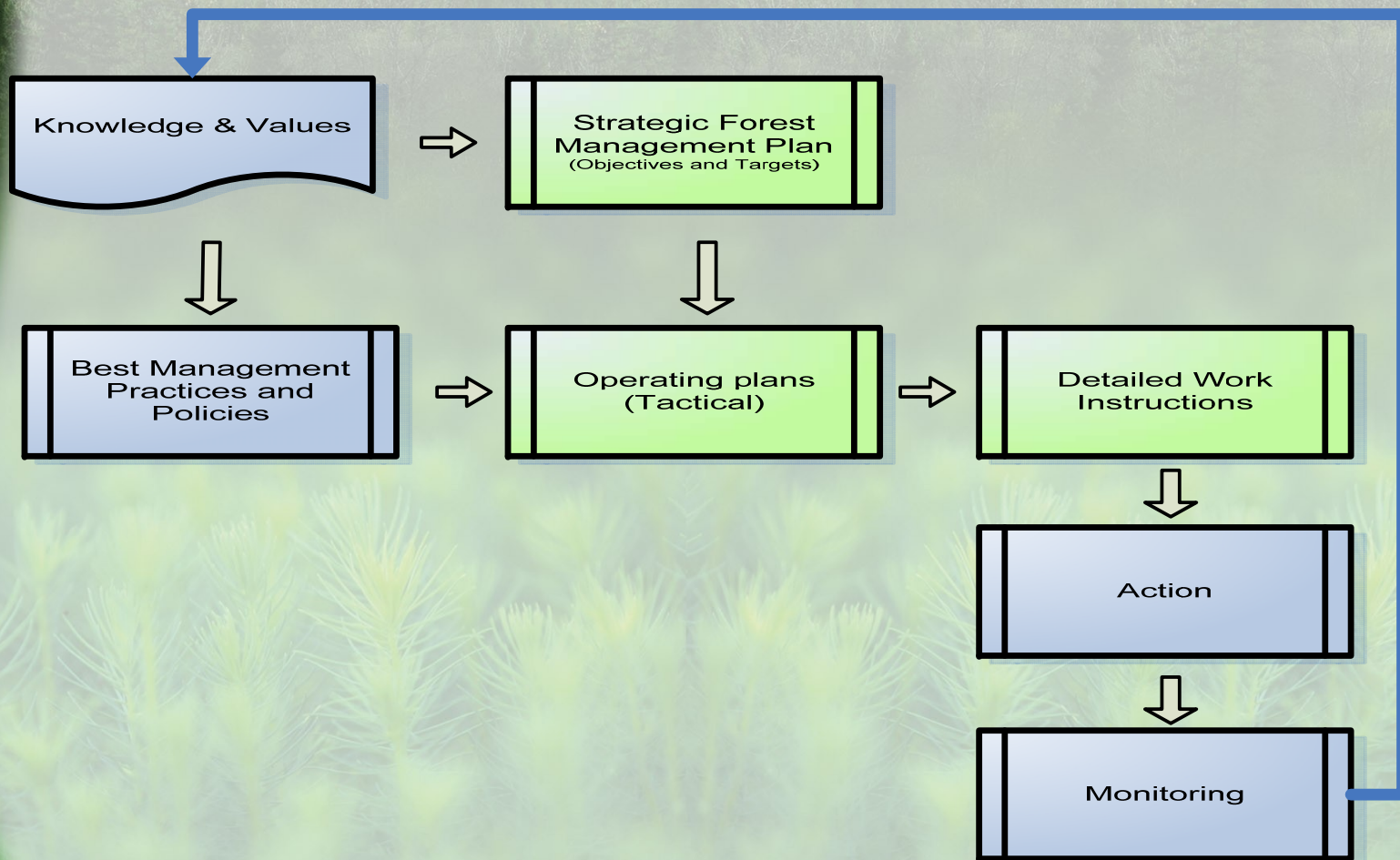


Outline

- Introduction
 - The current Context
 - Why the need for Research
- A history of JDI FRAC
- How do we Integrate Findings from Research
- New Questions



Our Forest Management Process





How we use new Knowledge

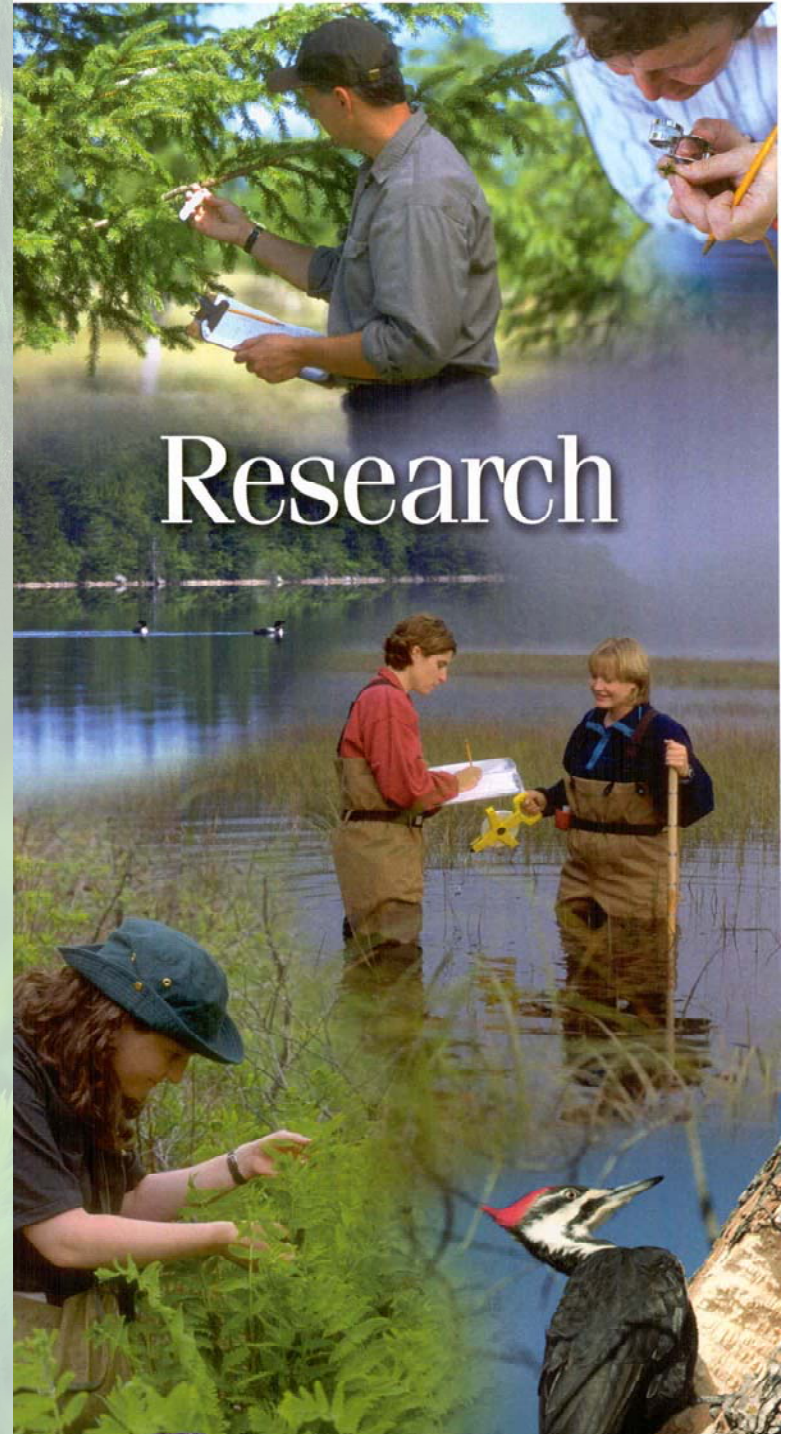
Knowledge gained from cooperative research is used to :

- **trigger analyses to quantify our baseline situation and/or prepare forecasts of future forest conditions to compare to proposed targets.**
- **initiate a review of how we inventory certain habitat features and stratify our forest inventory.**
- **formulate new management strategies, objectives, targets and measures.**
- **formulate Best Management Practices for implementation in the field**
- **come up with new research questions.**
- **include an issue as a new significant environmental impact in our EMS**



✓ Almost \$2M/year on Research

✓ Over 100 projects



Research

VR Design:

openings < 60 ha

> 1 island / 10 ha

clumps (+/- 1/2 ha)

Organic shape

Watertable tool

Special habitats

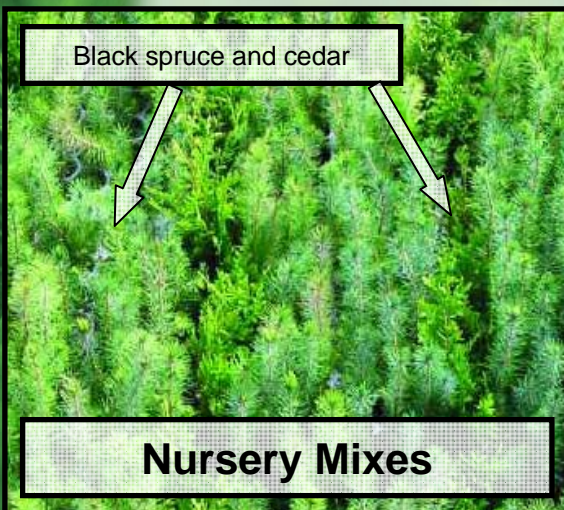
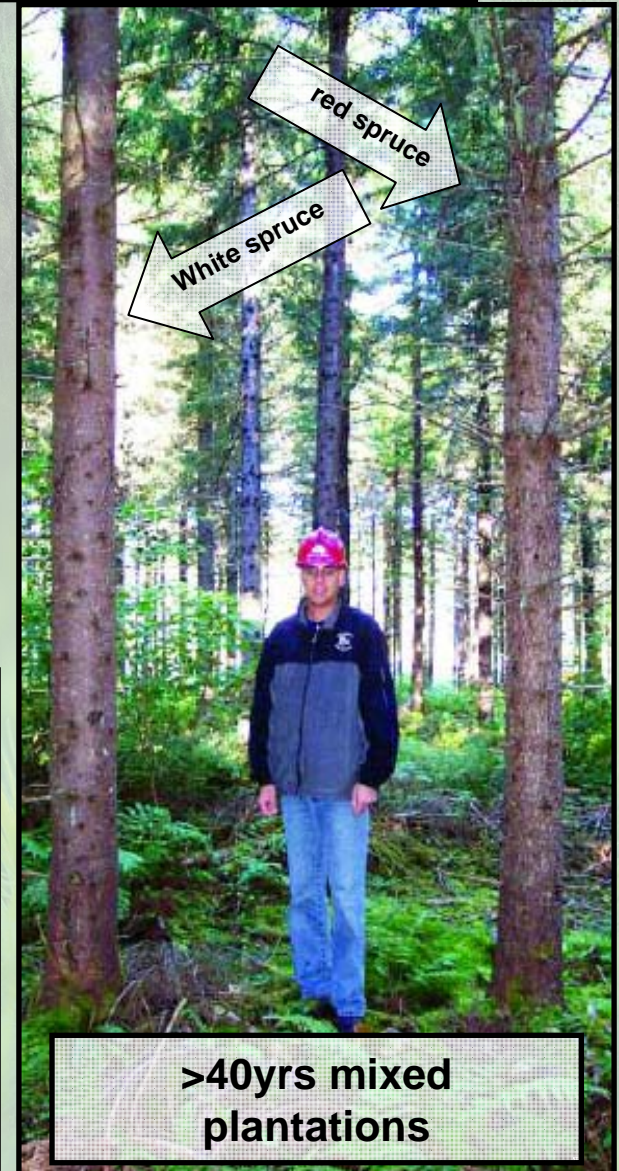
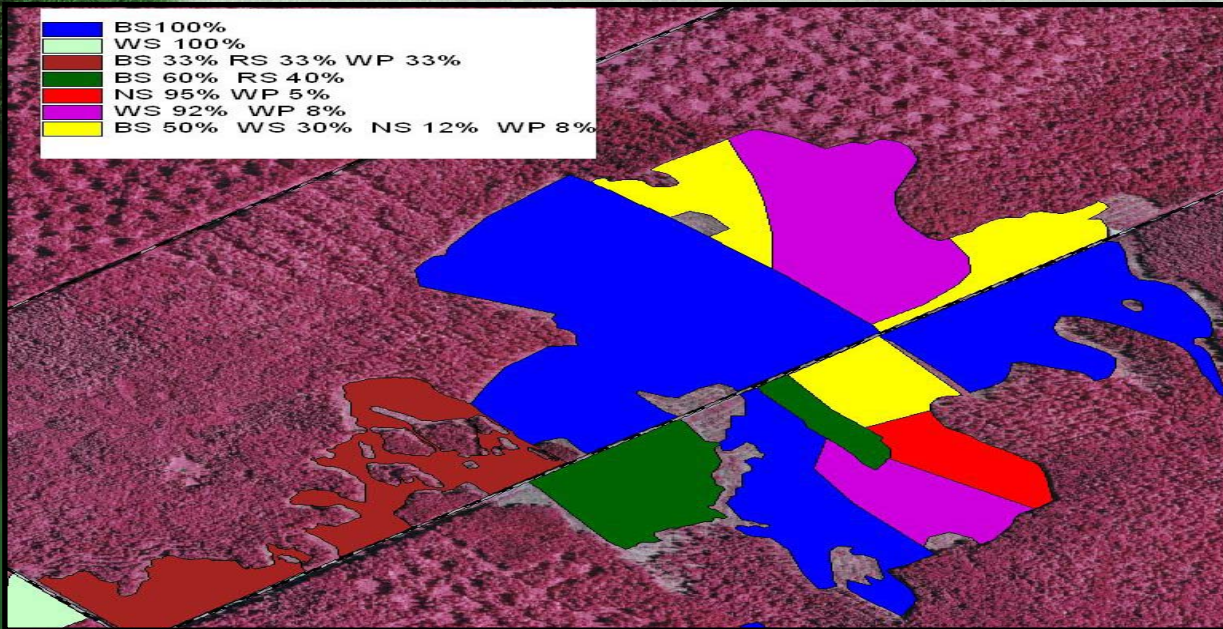
Rare plants

Examples of new knowledge at work





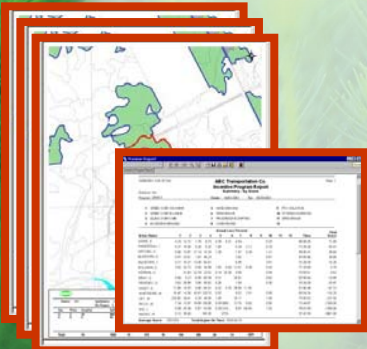
We have changed the way planted stands look...





Technology enables communication of Objectives all the way down to operators

Operating Plans



Reconnaissance / Validation



Ribbonless GPS Navigation





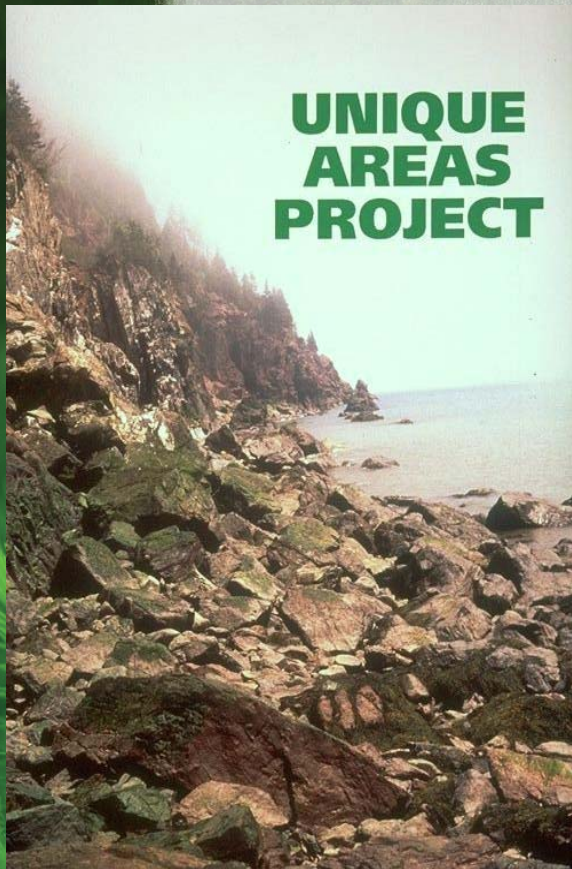
The results from past research are being used at Black Brook

- **Now in a position to evaluate changes made at landscape level for several indicators plus compare with future conditions**
- **Elaborate on the ground BMP's for critical habitat structures**
- **New Inventory standards were developed to measure habitat and structure**
- **Prepare more sophisticated objectives, targets, & measures for next forest mgmt. plan:**
 1. **Cover type distribution - Min. area key veg. communs. (HW, Ce, MW)**
 2. **Define max. area in plantations**
 3. **Patch size distribution – more sophisticated than 60ha max.**
 4. **Mixedwood Objectives**
 5. **Old Forest Types - target levels for various old habitat types**
 6. **Looking at modeling tree size distributions across the landscape**

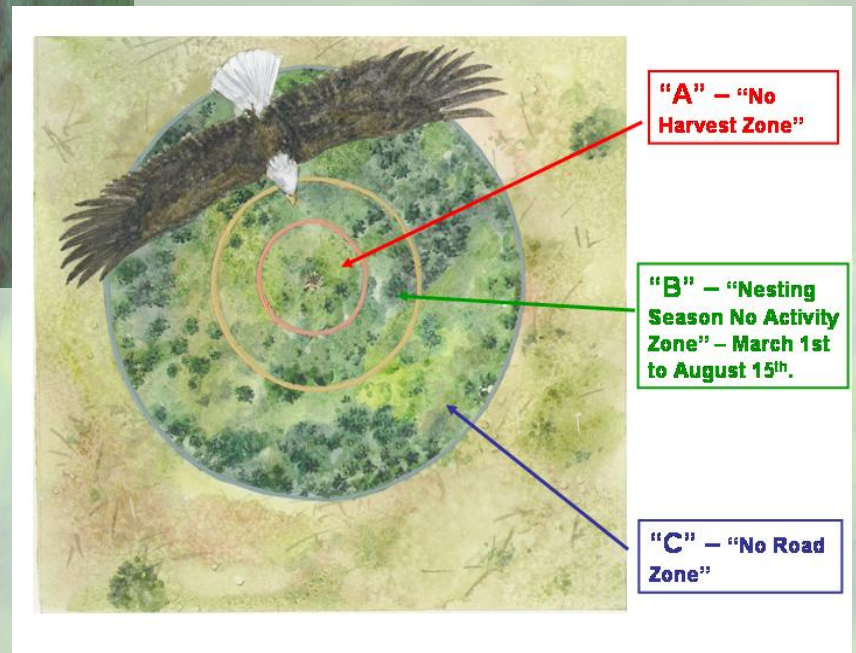


Some of the findings help in the design of specific Company Programs

UNIQUE AREAS PROJECT



Rare Plant Habitat Pre-Screening Program





Outline

- Introduction
 - The current Context
 - Why the need for Research
- A history of JDI FRAC
- How do we Integrate Findings from Research
- **New Questions**



Current JDI questions

- **How do intensively managed stands contribute to habitat and biodiversity?**
- **What role do mixedwood stands play in terms of diversity and habitat?**
- **What do we know about the stand dynamics under a natural disturbance regime?**
- **What is the importance of the context within which stands occur throughout the landscape?**

