

DYNAMICS OF MIXEDWOOD STANDS IN THE BLACK BROOK DISTRICT

Luke Amos-Binks
University of New Brunswick
September 9th, 2008

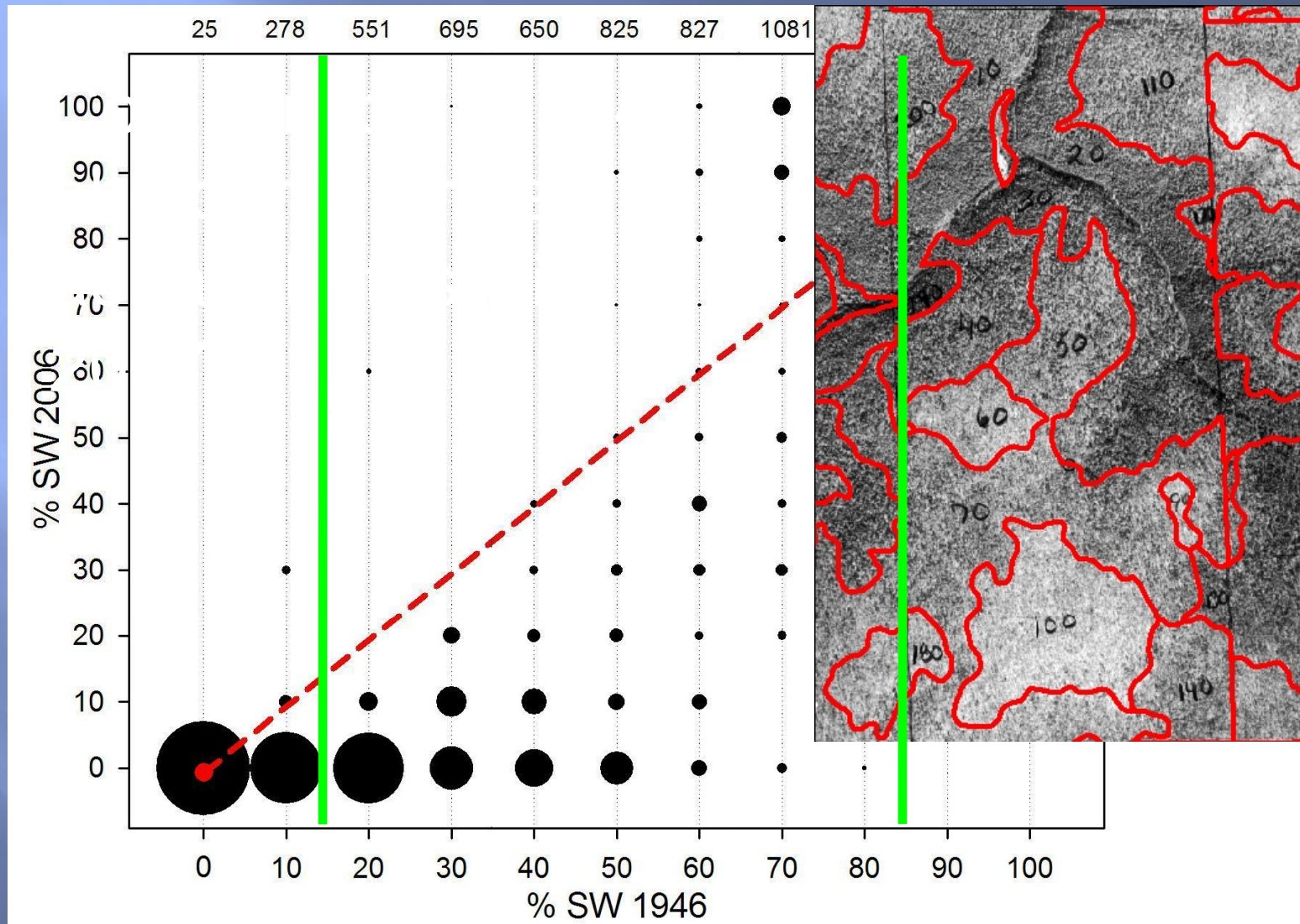
Background

1945 Stand Type	% Area by 2002 stand type			
	SWCE	SW	MW	HW
SWCE	58	18	10	14
SW	23	29	18	30
MW	13	13	18	56
HW	50	4	9	37

Etheridge et al. 2006

1945 Cruise maps vs. 2002 GIS inventory

Background



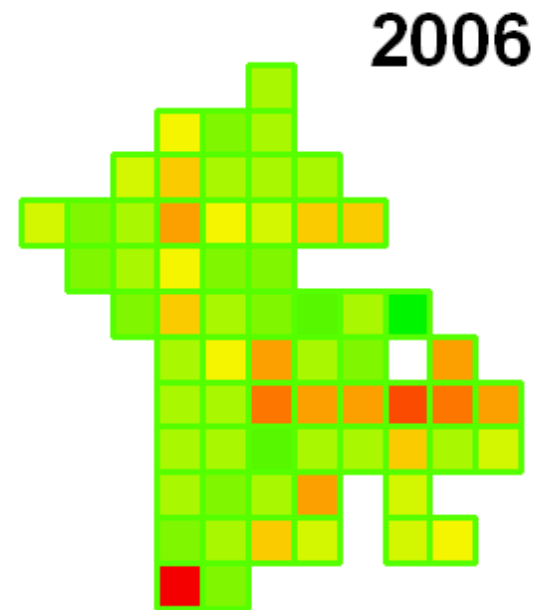
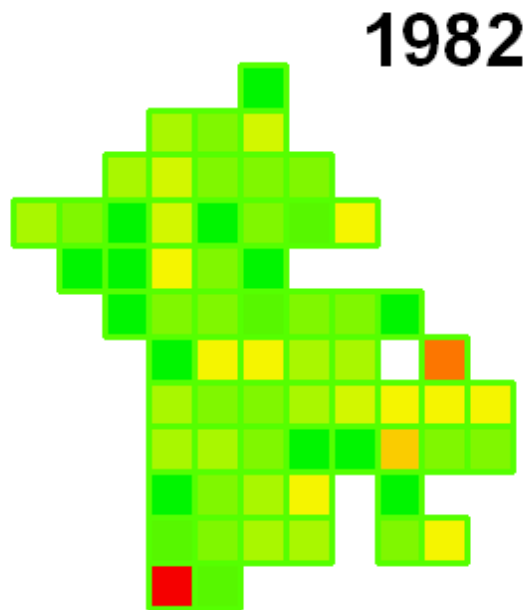
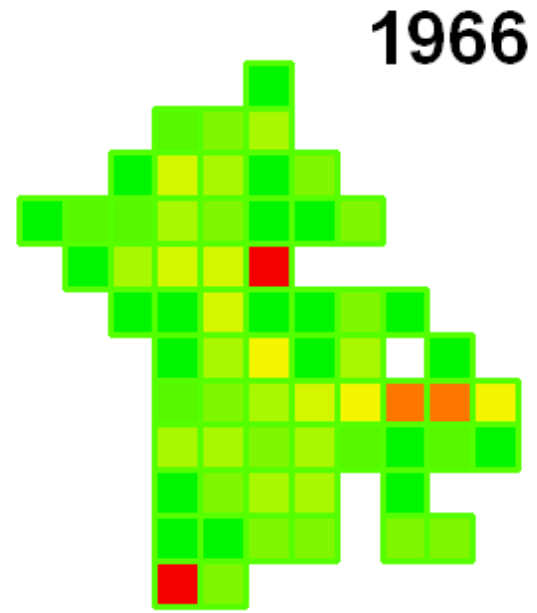
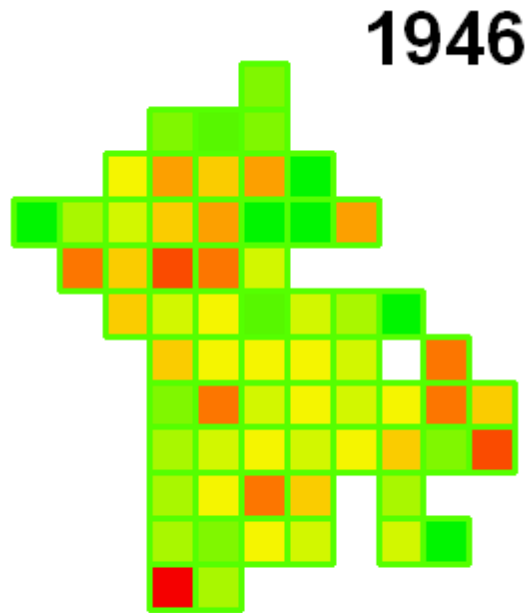
Objectives

- 1) Determine patterns of natural mixedwood stand dynamics from 1946-2006
- 2) Reconstruct the dynamics of natural mixedwood stands
- 3) Evaluate the potential changes in species composition under SBW outbreak scenarios



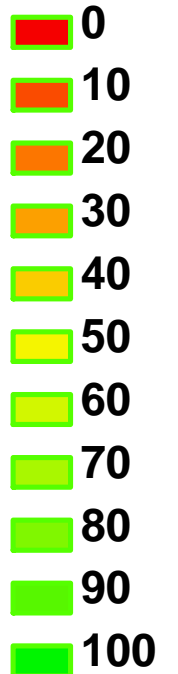
Determi

- ▣ Aerial
- ▣ 45 St
- ▣ 194
- ▣ Cha
- ▣ Meas
- ▣ Sof
- ▣ Har
- ▣ Car
- ▣ 50 by

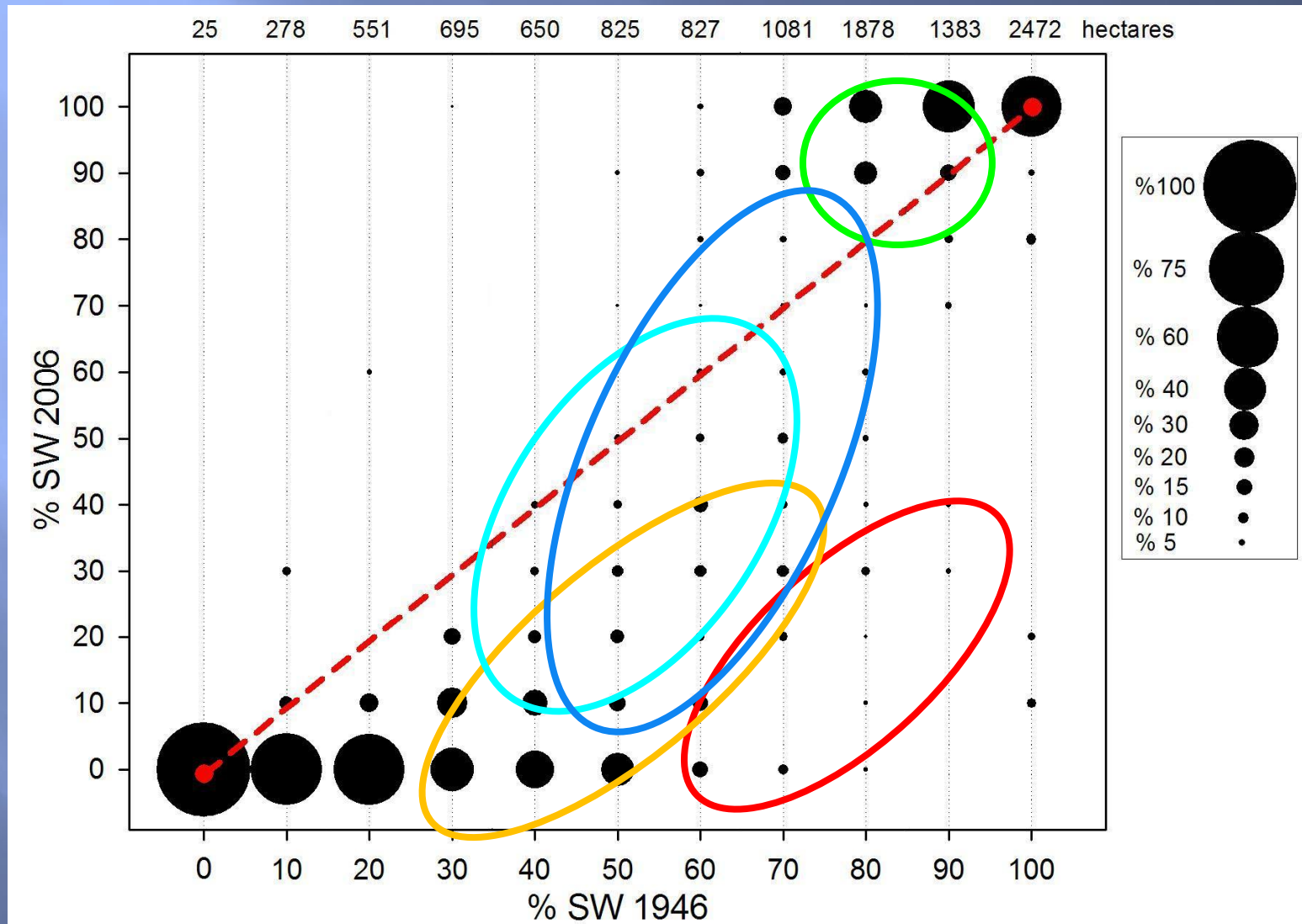


Softwood

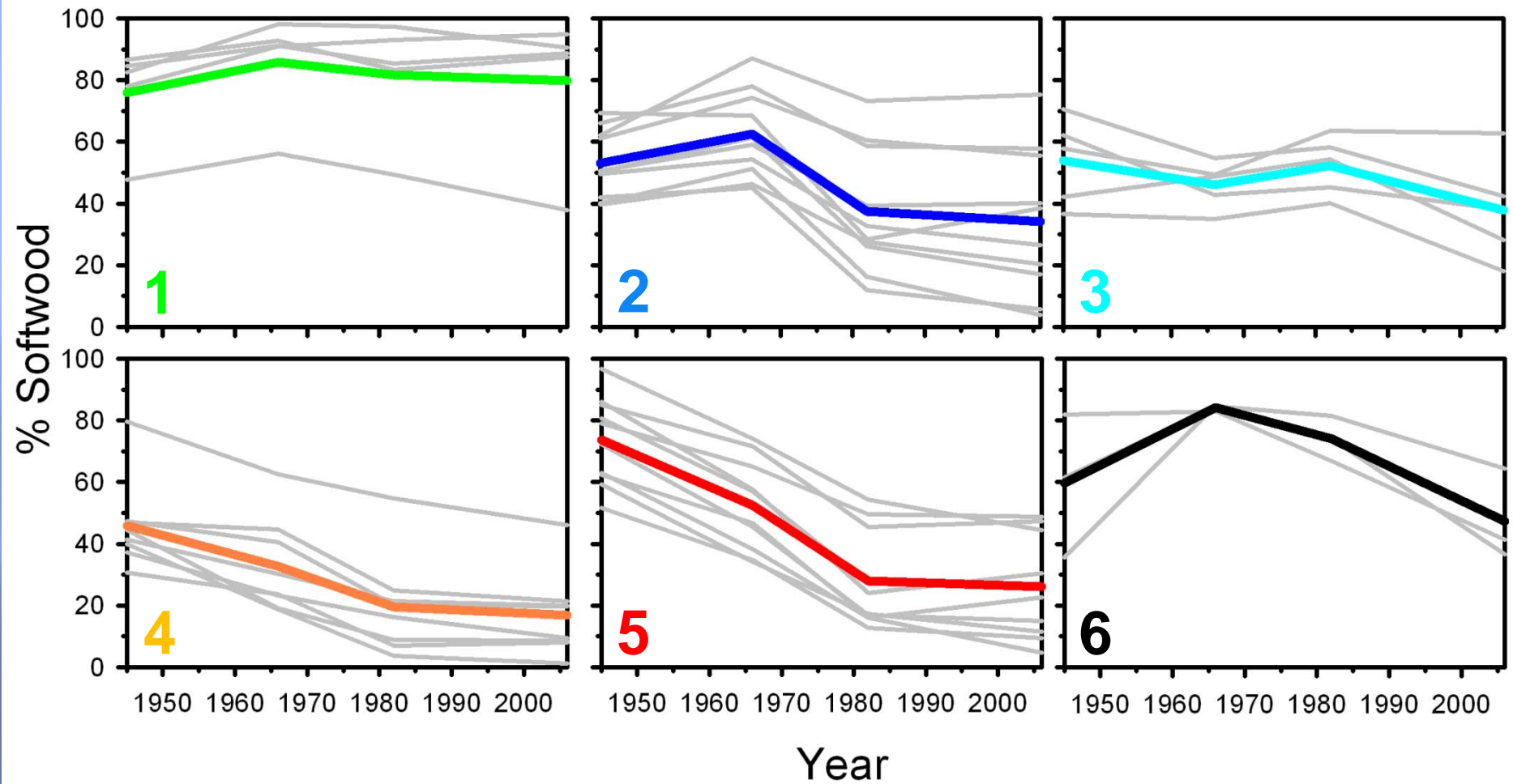
% Softwood



Determine the range of natural mixedwood stand dynamics 1946-2006



Determine the range of natural mixedwood stand dynamics 1946-2006

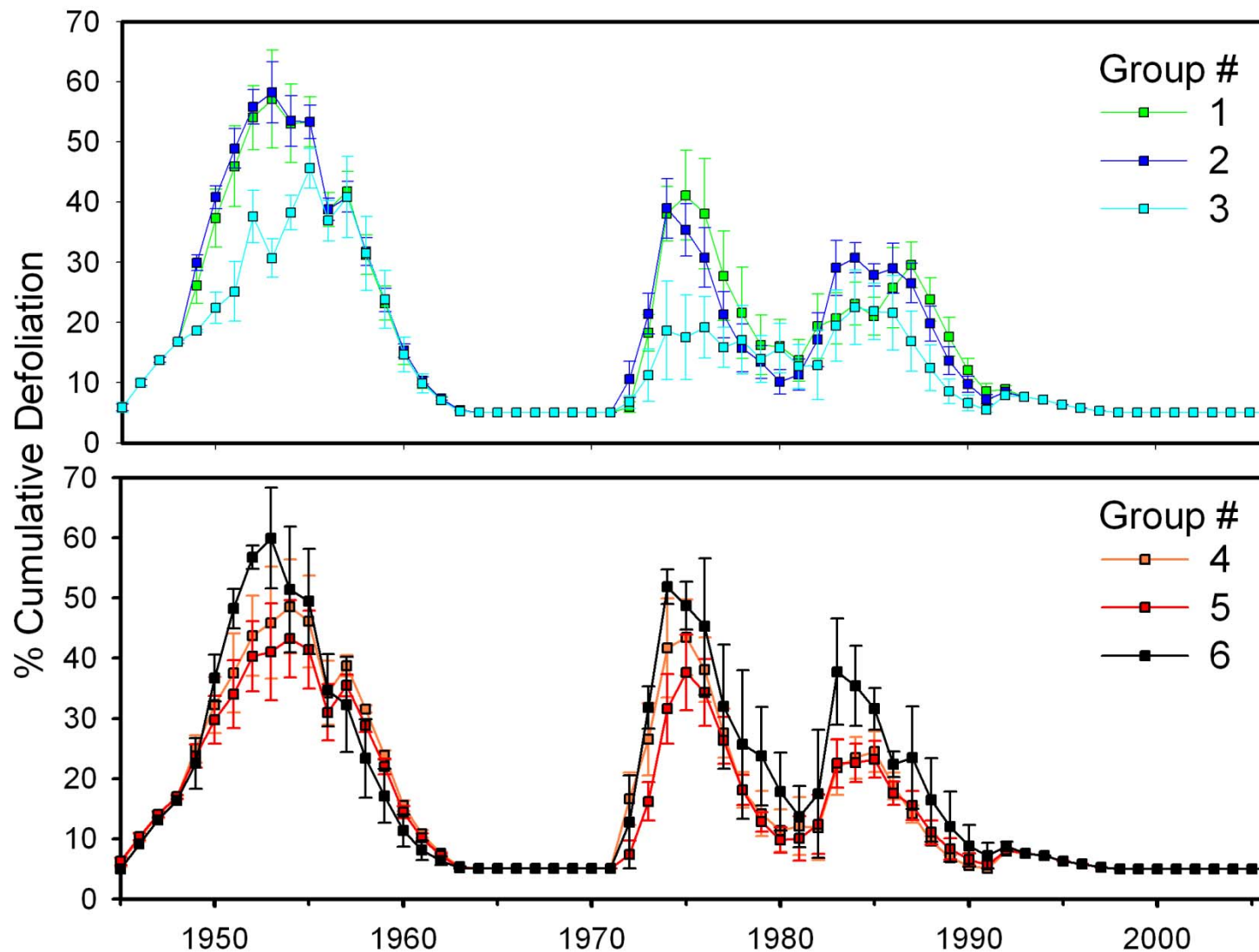


Determine the range of natural mixedwood stand dynamics 1946-2006

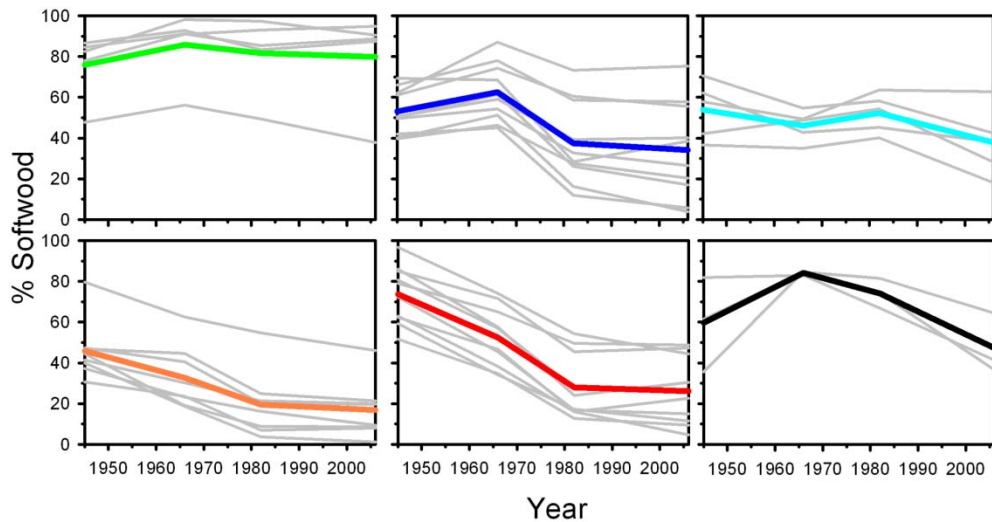
- ▣ What caused these differences in compositional patterns?
 - Natural disturbance
 - ▣ Spruce Budworm/Protection
 - ▣ Wind events
 - ▣ Dieback
 - ▣ Interactions
 - Stand structure
 - Site conditions



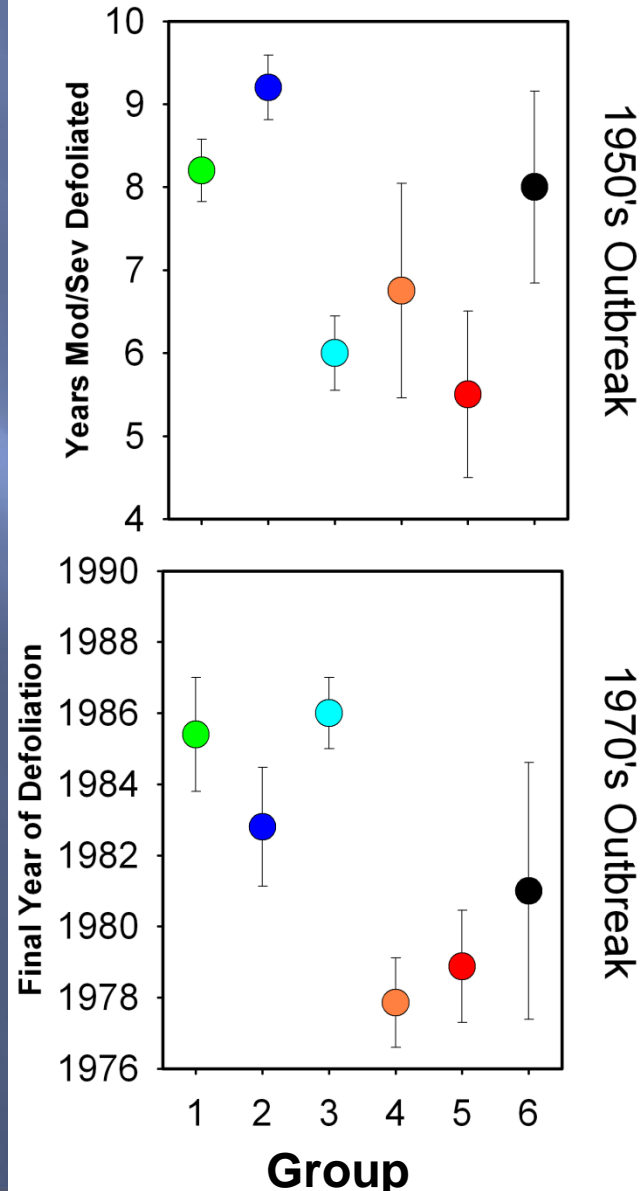
Spruce Budworm Defoliation



Spruce Budworm Defoliation

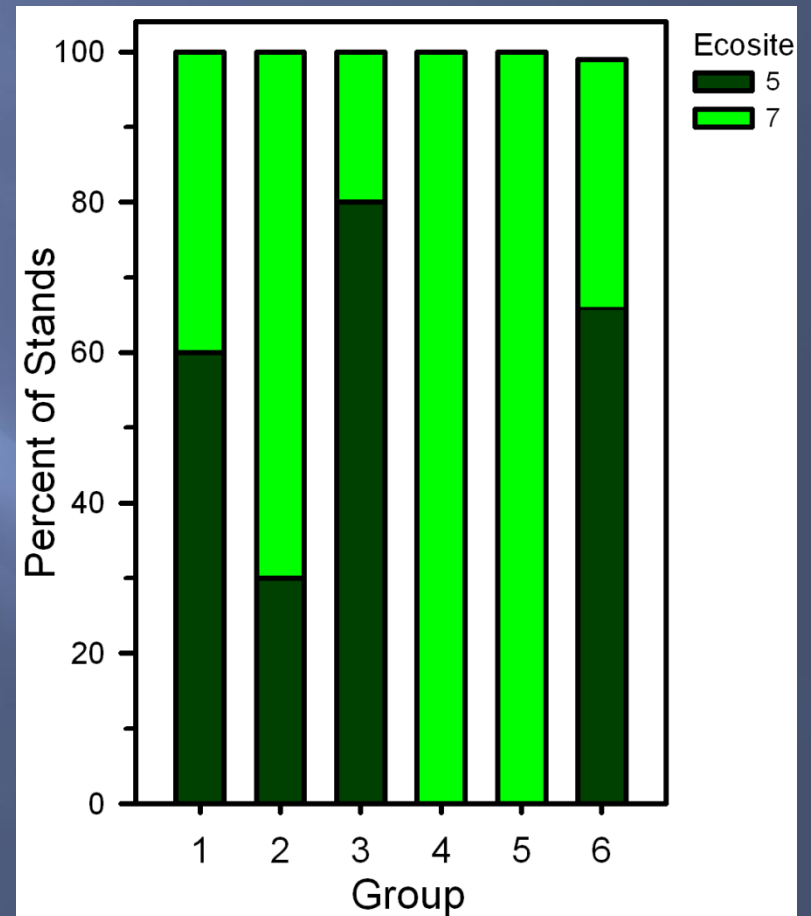


- Few significant differences between groups
 - Coarseness of defoliation maps
 - Species composition and stand structure following outbreak



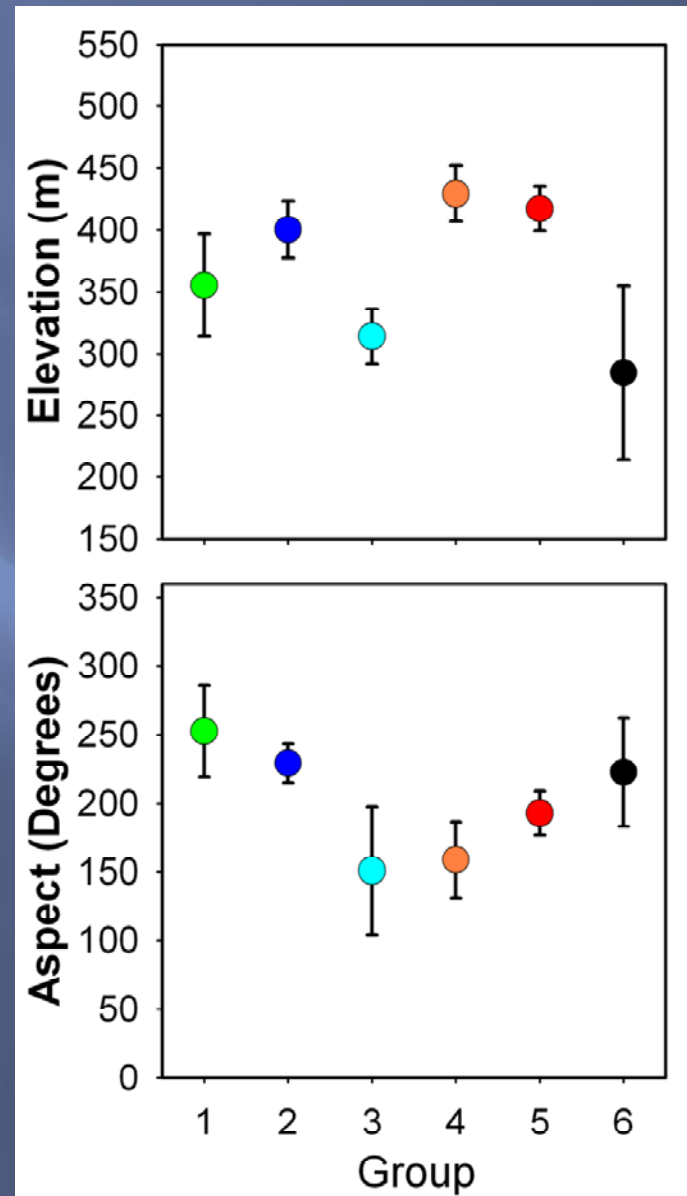
Site attributes

- Ecosite
 - 5 - Moderate nutrient regime
 - 7 - Rich nutrient regime
 - Ecosite 7 - more favorable for the establishment of hardwood



Site attributes

- Elevation
 - Groups of stands that experienced significant drops in softwood composition had higher elevations
- Aspect
 - Some differences in aspect may relate to growth conditions or susceptibility to windthrow



Reconstruct the dynamics of mixedwood stands

▣ Sampling

- Three prism plots randomly selected within representative cells in each stand
- Live and dead tree measurement
- Cores extracted from balsam fir, spruce, and non-host species - ~20 cores per stand

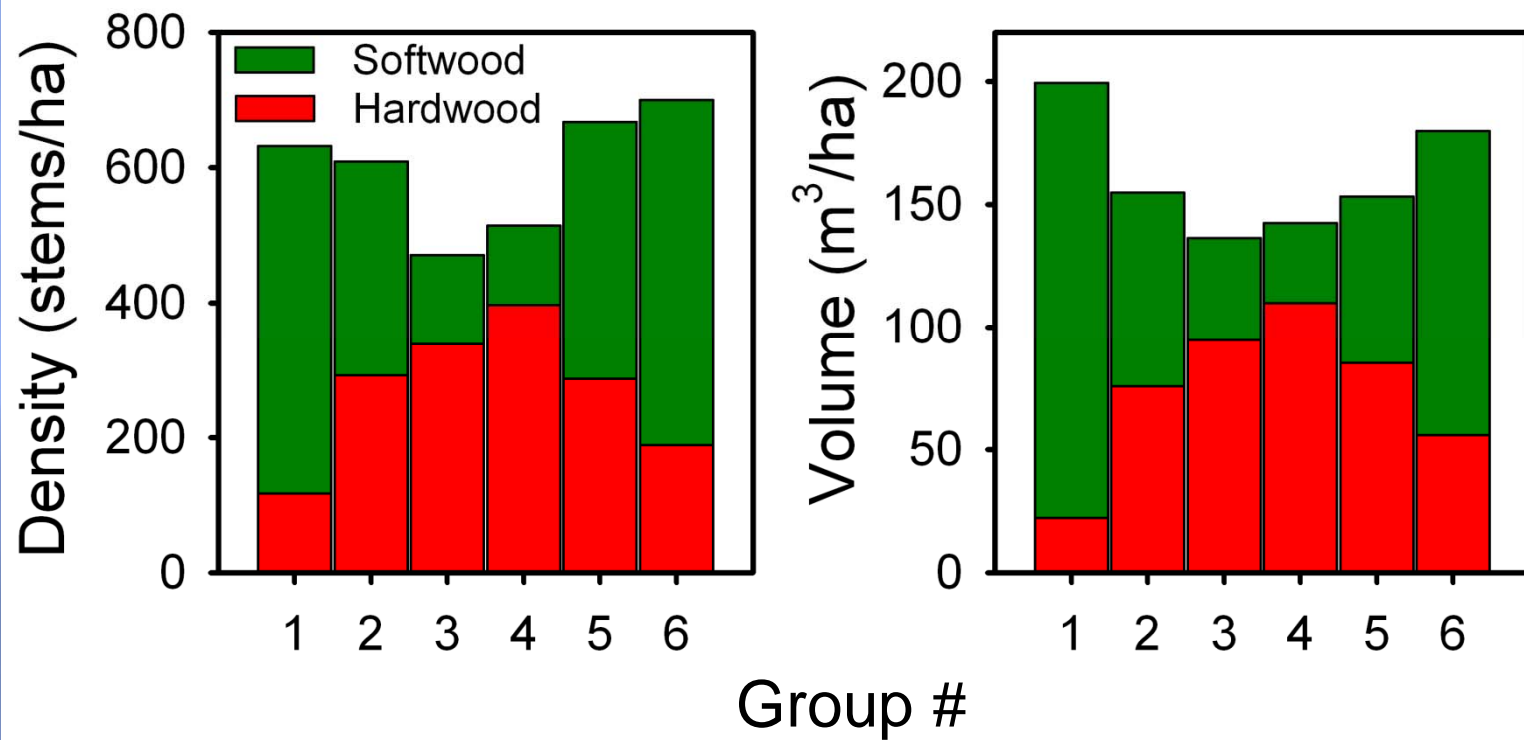


Reconstruct the dynamics of mixedwood stands

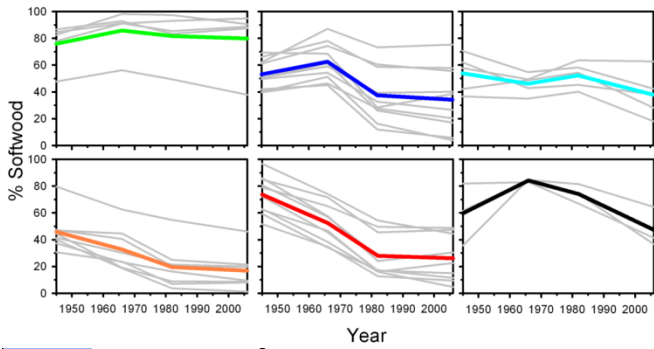
- Quantify budworm impact using host/non-host growth data
- Deadwood identification and crossdating
- Identify growth releases and recruitment
 - Disturbance
 - Growth following disturbance



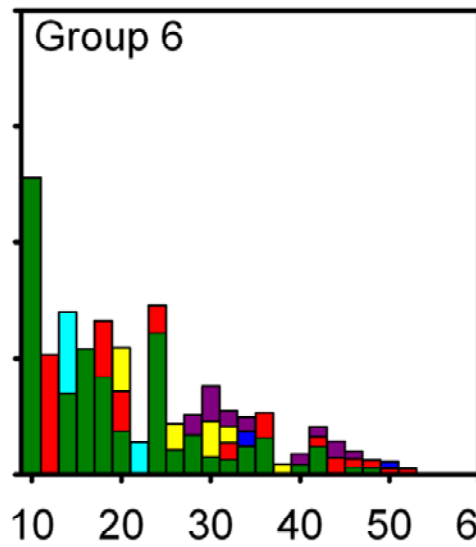
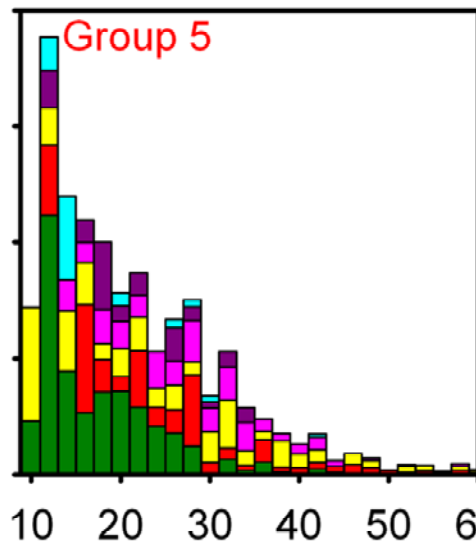
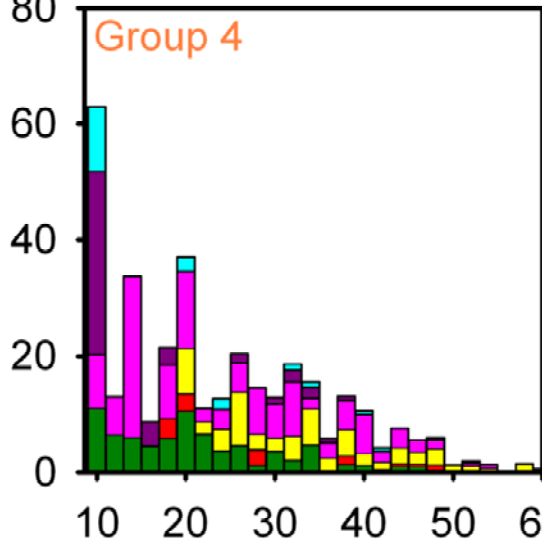
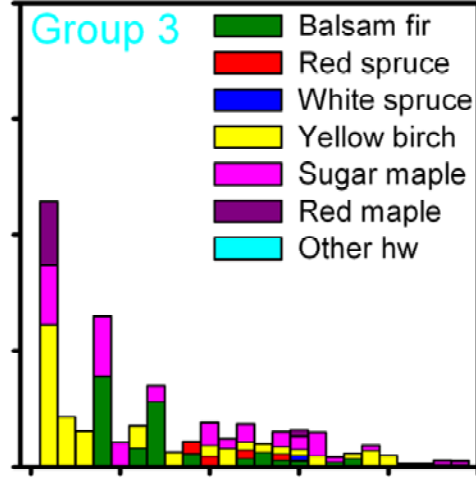
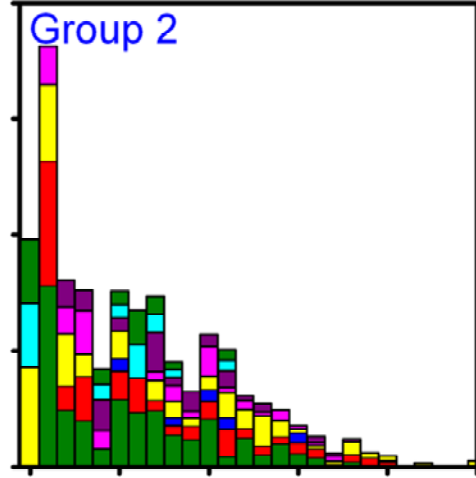
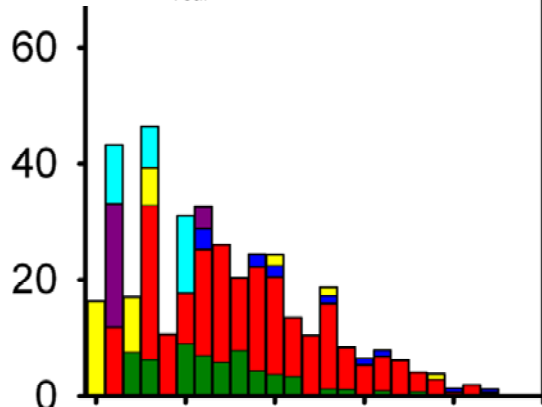
Stand Data



Stand Data



Density (stems/ha)



- Balsam fir
- Red spruce
- White spruce
- Yellow birch
- Sugar maple
- Red maple
- Other hw

Work to be completed

- ▣ Live tree and deadwood measurement and analysis

Questions?